

# Review on Information Seeking In Large Scale College Digital Library with Surface Computing

<sup>1</sup>Ms. Ashvini G. Bais, <sup>2</sup>Mrs. Nirlipta Pallabee Samapika

<sup>1,2</sup>Assistant professor, Department of Computer Science & Engineering, G.H.

Raisoni College of Engineering, Nagpur, Maharashtra, India.

<sup>1</sup>baisashu@gmail.com, <sup>2</sup>nirlipta.satapathy@gmail.com

**Abstract** In the historical backdrop of Libraries numerous progressions have occurred, from customary libraries to present day libraries, i.e. manual records to robotized and computerized records, innovative upheaval set the libraries in second to none. Presently after the advanced and virtual period, libraries are receiving the new innovations like distributed computing, six sense innovation. The six sense innovation is redesigning step by step, under this innovation Surface registering is changing physical universe of taking care of PCs with increased reality and this idea of six sense innovation will deal with computerized library and understudies will encounter the freshest time of technology. In this undertaking we are attempting knowledge the idea of enlarged archive and present another client experience to investigate and digitized a report or book, make possess vital notes or purposes of that record according to their comfort and make the record of made notes or focuses carefully and spare it in the framework or send or connect to their sends by making new Digital Library which contains gigantic amounts of substance joined from heterogeneous collections, with weighty difficulties in giving components to disclosure, brought together access, and analysis. We demonstrating that a blend of built up models by Bates, Ellis, and Wilson can oblige numerous parts of data looking for in college digital libraries at a wide, calculated, level. Every one of the understudies who will utilize this computerized library will get all the vital data with respect to their streams or different streams and effectively get to all errands viewing there scholastics, for example, aftereffects of exams, time tables of exams, all the data they required for their scholastics as this is school advanced library. We go on to identify the supplemental data looking for procedures necessary to specifically portray a few work set creation models.

**Keywords**— *Information-Seeking Behavior, Digital Libraries, Work set Creation*

## I. INTRODUCTION

The library is viewed as the 'operational hub of information', the focal point of scholarly life and the absolute entirety of the scholastic foundation. This implies disclosures are really made in the library and consequently tried in the research center. It possesses a vital place in the cutting edge training framework and keeps up the Expensive instructive assets of the scholarly establishments [1]. Digital library is "an overseen gathering of data, with related administrations, where the data is put away in computerized groups and available over a system".

The advanced library expands the expansiveness and size of insightful and social proof and backings inventive research and long lasting learning. To do this, it intercedes amongst differing and dispersed data assets from one viewpoint and a changing scope of client groups on the other. In this limit, it sets up "an advanced library benefit condition"- that is, an arranged online data space in which clients can find, find,

obtain access to and, progressively, utilize data. In spite of the fact that entrance ways will fluctuate contingent upon the asset being referred to, the computerized library benefit condition makes no qualifications among data groups. Books, diaries, paper-based documents, video, film, and sound chronicles are as obvious in the computerized library benefit condition as are online feline logs, discovering helps, abstracting and ordering administrations, e diary and e-print administrations, digitized accumulations, geographic data frameworks, Internet assets, and other "electronic" property [4].

In this undertaking a similar idea of advanced library will be worked however on school level. In this venture all the Engineering and Management streams related books are accessible for understudies however in advanced shape so they can undoubtedly get to their stuff without issuing books or sitting tight for accessibility of books. As all books are in computerized shapes number of understudies can get to same book in the meantime. There won't be the issue of lack

of books. In this venture we likewise make a work sets of all looking through that understudies will search. Work sets try to address these necessities, offering capacities, for example, gathering singular reports inside citable accumulations; supporting computational extraction of archive inferred highlights for insightful examination; creating new engaging data by derivation over existing metadata; and connecting correlative data from outer sources. Jett [11] actualizes work sets as machine-noteworthy research accumulations amassing individuals, metadata characteristic for the work set's fundamental. Nature, metadata natural for advanced models, metadata steady of human communications, and subordinate metadata from work set individuals, and metadata concerning work set provenance.

## II. LITERATURE REVIEW

Library is the core of any foundation. It is soul of any learning organization, which is rotate of educating learning process. School library assumes a critical part in giving general library and data administrations to the benefactors. We have recently entered in new thousand years and we have a great deal of difficulties before us for keeping in pace with present day improvement in data innovation which have brought data blast and data unrest [1]. PC is utilized as a part of libraries to build proficiency and adequacy of their activity and administrations; they have additionally given data administration to taking compelling choices. Improvement and utilization of data and correspondence innovation (ICT) empowers the libraries not exclusively to offer their customer base the suitable data accessible inside their Libraries yet in addition access list of different libraries, both nearby and outstations [2]. Mechanization of libraries has helped the libraries to keep pace with the most recent Development .This has additionally encouraged exactness, adaptability and unwavering quality in the library and data focus. Robotization of libraries lessens the monotonous work and spare time and brings exactness and speed. It additionally expands productivity in specialized preparing of library materials and enhance the proficiency of library organization and supervisor [3].

Library involves an imperative place in the cutting edge instruction framework and keeps up the Expensive instructive assets of the scholarly establishments. It is the duty of the staff of building and specialized libraries to give right data at the ideal time to right client to spare the season of the client. The libraries are fundamentally in charge of the determination and accumulation of material fitting for libraries, safeguarding and association of the gathering and spread of the material or the data, which it contains. Libraries as focal point of learning are assuming an imperative part in maintaining and fulfilling the data necessities of parent establishments. For the proficient, powerful and logical improvement of data assets and administrations, the libraries should be planned and grown efficiently in view of the contributions from ponders on existing assets and administrations, and the investigations on clients of building school libraries [3].

In developing a computerized library benefit condition, the library winds up in charge of arranging access to a universe of data of which it claims or oversees just a section. In like manner, the computerized library is known less for the degree and nature of the accumulations it possesses than for the arranged data space it characterizes through its online administrations. In the realm of business distributing, aggregators contend based on the esteem included administrations that they layer best of covering electronic accumulations. Essentially, computerized libraries set up their unmistakable characters, serve their client groups, stress their claimed accumulations, and advance their one of a kind institutional goals by the manner by which they uncover, give access to, and bolster the utilization of their undeniably virtual accumulations.

The computerized library benefit condition isn't just about access to, and utilization of, data. It additionally underpins the full scope of authoritative, business, and curatorial capacities required by the library to oversee, regulate, screen engagement with, and guarantee reasonable utilization of its accumulations whether in computerized or non-advanced configurations, regardless of whether found locally or off site. The computerized library benefit condition coordinates (and interfaces with) data storehouses that are described by open-get to racking, high-thickness book shops, and accessibility by means of interlibrary credit, and incorporate information administrations and advanced documented archives. It oversees data about accumulations and things inside accumulations regularly all through their whole life cycle. It consolidates benefactor, loaning, and different databases, and coordinates proper methods for client enlistment, confirmation, approval, and charge exchange handling. The computerized library benefit condition may likewise develop into an organized learning space, giving access to, and a curatorial home for, remove and deep rooted learning materials. The computerized library benefit condition is, in entirety, an electronic data space that backings altogether different perspectives and altogether different employments of the library. It is intended for the library's supporters and also for its expert staff and with an eye on the requirements and limits of the individuals who supply it with data substance and frameworks. It is worked in the full learning that data advances will keep on changing quickly as will our comprehension of how they can be utilized to help training and social engagement. At long last, it is advancing as the library's characterizing capacity and all things considered is produced with a view to its budgetary and authoritative manageability [4].

Data looking for conduct is an all-around contemplated field of data science [15]. Numerous models and reasonable structures have been proposed, somewhat because of an inclination of model creation over-elaboration [14]. Most settled models were to a great extent created in the 1980s-90s [3]; we talk about the most apropos here. Ellis' exceedingly compelling model of data looking for conduct in the examination procedure [6][8] was gotten from interviews with social researchers, physicists, scientists, and English writing analysts. It maps practices to eight classifications: beginning attributes of the underlying inquiry, e.g. references,

creators, or wide inquiries on seek devices; affixing, traversal of references and references; perusing, semi-coordinated or - organized looking of a region of potential enthusiasm; separating between sources, e.g. by approach, creator, or distribution scene; observing of a (sub-)field to stay up with the latest; removing those material from a hotspot for nearer thought; checking the exactness of data got, e.g. by reference to outer sources; and completion, data gathering toward the finish of an undertaking, e.g. To arrange it inside the more extensive writing.

Educated by Ellis, Bates' "berry picking" display [12] gives data looking for a role as a developing procedure of iterative refinement and preconceptions, where each experienced snippet of data gives new thoughts or headings. The client pursues leads between various sources utilizing a scope of procedures. Bates portrays six, noticing the set isn't comprehensive: subject pursuit; writer look; diary run, examination of all articles distributed in a diary for a given timespan; region checking, perusing of material arranged with beforehand recognized things (cf. physical library rack); in reverse tying by following references; and forward anchoring by discovering material referring to a given thing. The client's data require isn't fulfilled by a solitary arrangement of results, yet rather by a progression of choices of references and bits of data – undifferentiated from berries, scattered among shrubs in the woodland, being picked one modest bunch at any given moment.

### III. IMPLEMENTATION OF PROPOSED METHODOLOGY

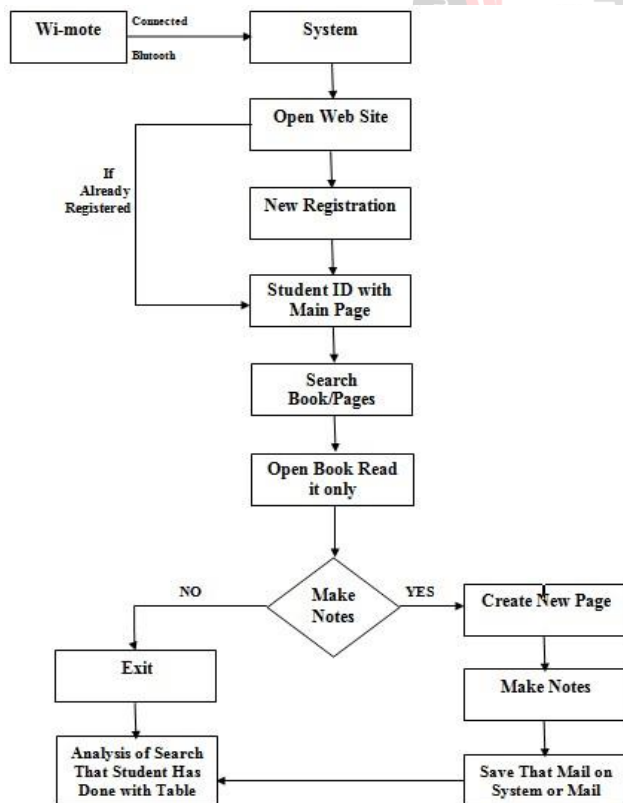


Fig 1. Block Diagram of System

In this venture, all the issue looked by understudies and curators will get diminished by influencing conventional

College to book Library into Digital Library. In this library, all books, magazines, papers, diaries in short all data, learning that understudies requirements for their scholastics all data, information are accessible however in computerized frame. Before this numerous Library Management Systems were made yet all that are valuable for Librarians, there was no utilization of understudies. This Digital Library is absolutely valuable and supportive for understudies and due to this Digital Library the workload Librarians likewise get decreased.

In this venture, every one of the information which is accessible for understudies that all are either in pdf or in archive frame implies add up to Library is in Digital form henceforth understudy can utilize this Library just on Computer Systems or Laptops. As this Library is Digital Library there is no issue of issuing every single book from Librarian as understudy enrolled themselves in this Digital Library they can consequently read all books they required without issuing them and most essential thing is that there is no time point of confinement to utilize that book. Whenever anyplace understudy can read that book and furthermore the lack of books won't happened implies as all books in computerized frame number of understudy can read same book at same time. As all understudies perusing books, magazines, diaries so they need to make notes of it this office likewise given in this Digital Library yet that notes will be in computerized shape. That made notes can be spared or understudies can joined that notes document to their sends.

We propose a model of data looking for conduct for academic work set creation in extensive scale computerized libraries, joining Bates' data looking for procedures [12], classes of data looking for conduct inside the examination procedure per Ellis [7], and Wilson's methods of data looking for [15]. Likewise, we group techniques as questioning, perusing, and contributing practices. The systems tons of use: content portrayals (e.g. Pictures, OCR'd content), content-determined metadata, got from content alone, relevant metadata, inferred by means of outer procedures. The primary point of this task is that understudy will get all scholarly learning at one place in the meantime with most recent innovation and understudy will get correct work set to comprehend what they look in computerized library by utilizing which content they utilized with Information Seeking Behavior. To work this Digital Library we are utilizing Surface Computing strategy which is gone under Sixth Sense Technology. This innovation is absolutely new for understudies so they can encounter the propelled approach to deal with PC framework and they will appreciate perusing.

Surface computing is completely spontaneous and free mind to accept new ideas to interact with digital content. It is very thin line between physical and virtual worlds. Imagine one student went to a library and seated on study table, on that table all the books in the library are given department wise and that student touches the surface of table and chooses book that he wants to read. The book he is selected get opened and student will start reading instead of issuing book from library. With this technology the efforts of



students get decreases. In above example the study table is computed surface. We really see this broadening content opportunities and delivery systems.

Surface computing is very powerful movement. In fact, it is drastic change from DOS [Disk Operating System] to GUI [Graphical User Interface]. This project shows that many people are intimidated and isolated by day to day growing technologies. Lots of features that are available in mobile phones, PCs and other electronic devices aren't used because the technology is threatening. Surface computing breaks down those traditional barriers to the technology because of that people can interact with all kinds of digital content in more spontaneously and efficient manner. It is all about technology adapting to the user instead of the user adapting to the technology. Bringing this kind of NUI [Natural User Interface] innovation to the computing space/surface is what surface computing is all about [5].

#### IV. CONCLUSION

We have presented a model of information-seeking behavior focusing on strategies for scholarly work set creation in the DL which is newly design. This Digital Library contains all assets which make study easy and students will get all data and information for their study. It also shows work flow of search in DL with work set. It combines aspects of three well- established models in the literature, introduces additional contributing strategies for information seeking, and specifies three scopes over which information-seeking strategies may be applied. These elaborations support the articulation of information-seeking behaviors concomitant to the emergent properties of large-scale digital libraries.

#### REFERENCES

- [1] Sinha. M K, Chakraborty. S K, hattacharjee.J.(2007) "Application of Information Communication Technology in college Libraries of Barak Valley (Southern Assam)".5th convention planner, Guhati, Ahmadabad: INFLIBNET centre Dec.7-8
- [2] Mulla KR, Chandrashekara M. (2010) Use of Integrated library software: A survey of Engineering College libraries in Karnataka. International Journal of Information Science & Management, vol.8, no.2, July-December.
- [3] Sangeeta, Keisham & Sarika, L. (2008) Evaluation of ICT Based services in the academic libraries of Manipur: A Study. 6th International CALIBER. Allahabad.
- [4] Daniel Greenstein, CLIR, 1755 Massachusetts Avenue, NW, Suite 500, Washington, DC 20036 LIBRARY TRENDS, Vol. 49, No. 2, Fall 2000, pp. 290-303 02001 The Board of Trustees, University of Illinois.
- [5] Terrenghi L., et al. Affordances for manipulation of physical versus digital media on interactive surfaces. In Proceedings of CHI '07. ACM, New York, NY, 1157-1166.
- [6] Introduction to Digital Libraries Minitrack Jieh Hsiang Andreas Rauber Frederick Zarndt Research Center for Digital Humanities Vienna University of Technology Global Connexions National Taiwan University Institute of Software Technology at 45th Hawaii International Conference on System Sciences 978-0-7695-4525-7/12 \$26.00 © 2012 IEEE DOI 10.1109/HICSS.2012.17
- [7] D. Ellis. 1993. Modeling the information-seeking patterns of academic researchers: A grounded theory approach. *Š e Library Quarterly* (1993), 469–486.
- [8] D. Ellis, D. Cox, and K. Hall. 1993. A comparison of the information seeking patterns of researchers in the physical and social sciences. *Documentation* 49, 4 (1993), 356–369.
- [9] K. Fenlon, M. Senseney, and et al. 2014. Scholar-built collections: A study of user requirements for research in large-scale digital libraries. In *In Proc. ASIST*.
- [10] Hinze, C. Taube-Schock, D. Bainbridge, R. Matamua, and J. S. Downie. 2015. Improving Access to Large-scale Digital Libraries through Semantic-enhanced Search and Disambiguation. In *Proceedings of the 15th ACM/IEEE-CS Joint Conference on Digital Libraries*. ACM Press, 147–156.
- [11] J. Jett, T. W. Cole, C. Maden, and J. S. Downie. 2016. The HathiTrust Research Center Workset Ontology: A Descriptive Framework for Non-Consumptive Research Collections. *Journal of Open Humanities Data* 2 (2016).
- [12] M. J. Bates. 1989. The Design of Browsing and Berrypicking Techniques. *Online review* 13, 5 (1989), 407–424.
- [13] R. L. Daft and K. E. Weick. 1984. Toward a Model of Organizations as Interpretation Systems. *Academy of Management Review* 9, 2 (1984), 284–295.
- [14] R. Savolainen. 2016. Contributions to conceptual growth: The elaboration of Ellis's model for information-seeking behavior. *Journal of the Association for Information Science and Technology* (2016).
- [15] T. D. Wilson. 1997. Information behaviour: An interdisciplinary perspective *Information Processing & Management* 33, 4 (July 1997), 551–572.